

SONY

SNC-M Series
MPEG-4 Video Network Cameras



Be where you want to be.
See what you want to see.



You make it a Sony

Sony Network Cameras – A World of Applications

The Sony SNC-M Series is an affordable range of all-in-one network cameras that incorporate built-in web servers, network interfaces and built-in microphones to their compact and stylish bodies. With a single camera, both video and audio monitoring can be achieved over a network to meet the demands of a wide range of applications.

The cameras utilise the MPEG-4 compression format, which achieves a high-compression ratio, providing smooth video and audio streaming over network environments – including those with limited bandwidth.

With various convenient features such as a user-friendly GUI, PAN/TILT functions (SNC-M3/SNC-M3W) and wireless connectivity (SNC-M1W/SNC-M3W), the SNC-M Series expands the possibility of IP-based monitoring applications ranging from web streaming to education, office monitoring, home security and far beyond.



* The SNC-M1W and SNC-M3W support the IEEE802.11b standard for wireless operations.



Features

All-in-One Network Camera

The compact, all-in-one design of the SNC-M Series includes a built-in web server, a 100Base-TX/10Base-T (RJ-45) network interface, and a built-in microphone. This enables users to monitor live images and control cameras on a PC running a standard web browser; no additional software is required.

Just connect the cameras to a network and you can access the images from remote locations on your networked PC.

Superior Picture Quality and Smooth Video

The SNC-M Series supports both the MPEG-4 video and widely-used JPEG compression formats. Users can choose the compression format they prefer and the image size. 320 x 240 sized images offer a maximum frame rate of 30 fps, while 640 x 480 sized images provide clear and detailed viewing. What's more, the SNC-M Series automatically adjust audio and video bit rate to meet changing network conditions, allowing users to view smooth video images even at low bandwidths.

Audio Monitoring

Incorporating a built-in microphone and an external microphone input, the SNC-M Series allows for audio monitoring as well as video monitoring. The external microphone greatly enhances the ability to pick up the desired sound from the preferred location. The unit also comes equipped with a speaker output; allowing users to communicate with the remote site.



PAN/TILT Capability (SNC-M3/SNC-M3W)

The SNC-M3 and SNC-M3W incorporate a PAN/TILT capability ideal for monitoring applications that require wide-area viewing.

Pan Range: 120° (+60° to -60°)

Tilt Range: 60° (+10° to -60°)

Wireless Remote Operation (SNC-M1W/SNC-M3W)

The SNC-M1W and SNC-M3W support the IEEE 802.11b standard for wireless operation. This greatly adds to the installation flexibility of the cameras and removes the need for dedicated wiring. Be it a doorway, meeting room or store cupboard, you can install a camera anywhere that cabled network coverage is difficult or non-existent.

User-Friendly Controls

Camera settings, controls and monitoring are easy thanks to a user-friendly graphical user interface (GUI) on the PC monitor. In addition, the GUI background can be changed to any one of three colours depending on the user's preference.

Network Features Simultaneous Access

Up to 20 (JPEG mode)/10 (MPEG-4 mode) users can simultaneously access the SNC-M Series and monitor images separately.

Network Security Features

Access to the SNC-M Series can be restricted to one or more groups of selected users. Up to ten different groups can be established by defining an IP address range for each group. In addition, the SNC-M3 and SNC-M3W allow users to assign user names and passwords to permit PAN/TILT operations.

Alarm Function

When an alarm is triggered by the motion detection function*, a preset message can be sent to up to three specified e-mail addresses, providing users with immediate feedback on the situation at the camera site.

* The motion detection function can be used when the unit is set to MPEG-4 mode.

Flexible Installation

The SNC-M Series can be wall or ceiling-mounted or placed on a desk-top using the supplied camera stand, providing flexible installation to meet your specific needs.



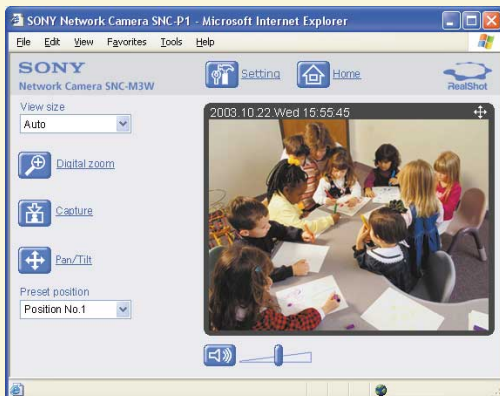
SNC-M1/SNC-M1W



SNC-M1/SNC-M1W



SNC-M3/SNC-M3W



Rear panel



Specifications

	SNC-M1	SNC-M1W	SNC-M3	SNC-M3W
Camera				
Image device	1/4-type CMOS			
Number of effective pixels (H x V)	652 x 482			
Pan range	–	–	+ 60 to - 60 degrees	
Tilt range	–	–	+ 10 to -60 degrees	
Lens type	Fixed focal lens			
Focal length	f=3.7 mm			
Viewing angle	Horizontal: 51.0°, Vertical: 38.9°			
Minimum object distance	80 cm			
Video				
Compression format	MPEG-4, JPEG			
Image size (H x V)				
MPEG-4 mode	640 x 480, 320 x 240, 160 x 120			
JPEG mode	640 x 480, 320 x 240, 160 x 120			
Maximum frame rate				
MPEG-4 mode	Max. 30 fps (320 x 240)			
JPEG mode	Max. 30 fps (320 x 240)			
Audio				
Audio compression	G.726 (40, 32, 24, 16 Kbps)			
Built-in microphone	Electret condenser microphone			
Network				
Protocols	TCP/IP, ARP, ICMP, DHCP, DNS, HTTP, FTP, SMTP, NTP			
Wireless LAN				
Standard	–	IEEE802.11b (2.4 GHz)	–	IEEE802.11b (2.4 GHz)
Transmission Speed	–	11Mbps/5.5Mbps/2Mbps/1Mbps (Auto Switch)	–	11Mbps/5.5Mbps/2Mbps/1Mbps (Auto Switch)
Security	–	WEP (64/128 bits)	–	WEP (64/128 bits)
Interface				
Ethernet	100Base-TX/10Base-T (RJ-45)			
External microphone input	Mini-jack, 2.4 VDC plug-in power, 2.2 k ohm			
Audio line output	Mini-jack			
General				
Mass	Approx. 230 g (8 oz)	Approx. 240 g (8 oz)	Approx. 380 g (13 oz)	Approx. 390 g (14 oz)
Dimensions (Dia. x H)	110 x 68.5 mm (4 3/8 x 2 3/4 inches) (excludes projection port)		110 x 104 mm (4 3/8 x 4 1/8 inches) (excludes projection port)	
Power requirements	DC 5 V			
Power consumption	2.7 W	3.5 W	6.7 W	7.5 W
Operating temperature	0 to +40 °C (32 to 104 °F)			
Storage temperature	-20 to +60 °C (-4 to +140 °F)			
Operating humidity	20 to 80%, non-condensing			
Storage humidity	20 to 95%, non-condensing			
Supplied accessories				
	AC adaptor Camera stand Wire Rubber foot CD-ROM (users guide, supplied program) Installation manual		AC adaptor Camera stand Wire Rubber foot CD-ROM (users guide, supplied program) Installation manual	
System requirements				
Operating system	Microsoft® Windows® 2000/XP			
Processor	Intel® Pentium® III, 1 GHz or higher (Recommendation: Pentium IV, 2 GHz or higher)			
Memory	256 MB RAM minimum			
Web browser	Microsoft Internet Explorer® version 5.5 or 6.0			

© 2004 Sony Corporation. All rights reserved. Reproduction in whole or in part without written permission is prohibited. Design, features and specifications are subject to change without notice. All non-metric mass and measurements are approximate. Sony is a registered trademark of Sony Corporation. All other trademarks are the property of their respective owners. CA SNC-M Series/GB-31/12/2004

SONY

SONY EUROPE

www.sonybiz.net